

**PDCL Antibody (N-term)**  
**Purified Rabbit Polyclonal Antibody (Pab)**  
**Catalog # AP20562a**

**Specification**

---

**PDCL Antibody (N-term) - Product Information**

Application	IHC-P, WB,E
Primary Accession	<a href="#">Q13371</a>
Other Accession	<a href="#">Q63737</a> , <a href="#">Q9DBX2</a> , <a href="#">Q2HJA9</a>
Reactivity	Human
Predicted	Bovine, Mouse, Rat
Host	Rabbit
Clonality	Polyclonal
Isotype	Rabbit IgG
Calculated MW	34282

**PDCL Antibody (N-term) - Additional Information**

**Gene ID** 5082

**Other Names**

Phosducin-like protein, PHLP, PDCL, PHLOP1, PhLP1

**Target/Specificity**

This PDCL antibody is generated from a rabbit immunized with a KLH conjugated synthetic peptide between 1-30 amino acids from the N-terminal region of human PDCL.

**Dilution**

IHC-P~~1:25

WB~~1:1000

E~~Use at an assay dependent concentration.

**Format**

Purified polyclonal antibody supplied in PBS with 0.09% (W/V) sodium azide. This antibody is purified through a protein A column, followed by peptide affinity purification.

**Storage**

Maintain refrigerated at 2-8°C for up to 2 weeks. For long term storage store at -20°C in small aliquots to prevent freeze-thaw cycles.

**Precautions**

PDCL Antibody (N-term) is for research use only and not for use in diagnostic or therapeutic procedures.

**PDCL Antibody (N-term) - Protein Information**

**Name** PDCL

**Synonyms** PHLOP1, PhLP1

**Function** Acts as a positive regulator of hedgehog signaling and regulates ciliary function.  
[Isoform 2]: Acts as a negative regulator of heterotrimeric G proteins assembly by trapping the preloaded G beta subunits inside the CCT chaperonin.

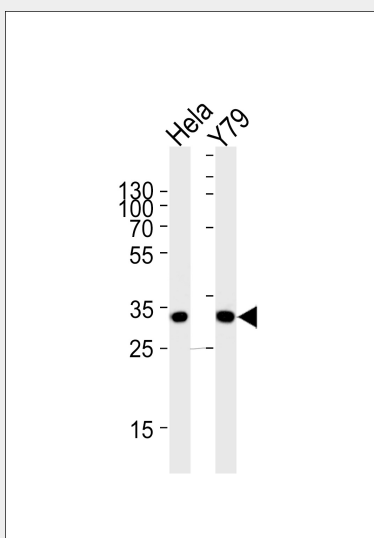
**Cellular Location**

Cell projection, cilium {ECO:0000250|UniProtKB:Q9DBX2}

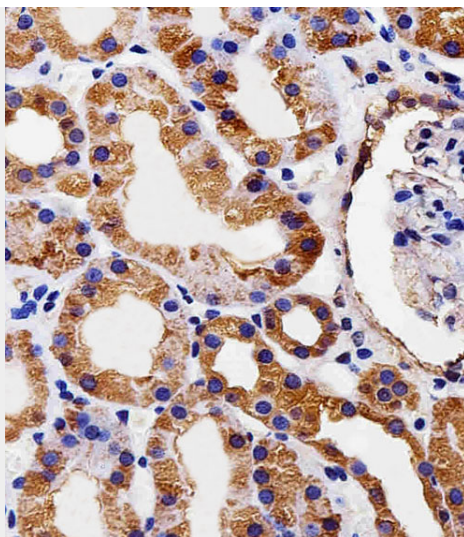
**PDCL Antibody (N-term) - Protocols**

Provided below are standard protocols that you may find useful for product applications.

- [Western Blot](#)
- [Blocking Peptides](#)
- [Dot Blot](#)
- [Immunohistochemistry](#)
- [Immunofluorescence](#)
- [Immunoprecipitation](#)
- [Flow Cytometry](#)
- [Cell Culture](#)

**PDCL Antibody (N-term) - Images**

Western blot analysis of lysates from HeLa, Y79 cell line (from left to right), using PDCL Antibody (N-term)(Cat. #AP20562a). AP20562a was diluted at 1:1000 at each lane. A goat anti-rabbit IgG H&L(HRP) at 1:5000 dilution was used as the secondary antibody. Lysates at 35ug per lane.



Immunohistochemical analysis of paraffin-embedded H.kidney section using PDCL Antibody (N-term)(Cat#AP20562a). AP20562a was diluted at 1:25 dilution. A peroxidase-conjugated goat anti-rabbit IgG at 1:400 dilution was used as the secondary antibody, followed by DAB staining.

#### **PDCL Antibody (N-term) - Background**

Isoform 1: Functions as a co-chaperone for CCT in the assembly of heterotrimeric G protein complexes, facilitates the assembly of both Gbeta-Ggamma and RGS-Gbeta5 heterodimers.

#### **PDCL Antibody (N-term) - References**

Lazarov M.E.,et al.Submitted (OCT-1997) to the EMBL/GenBank/DDBJ databases.  
Wiemann S.,et al.Genome Res. 11:422-435(2001).  
Ota T.,et al.Nat. Genet. 36:40-45(2004).  
Humphray S.J.,et al.Nature 429:369-374(2004).  
Mural R.J.,et al.Submitted (JUL-2005) to the EMBL/GenBank/DDBJ databases.